



ARISTON

SPARE PARTS EXPLODED VIEW GAS WALL BOILERS

Model

EGIS - AS

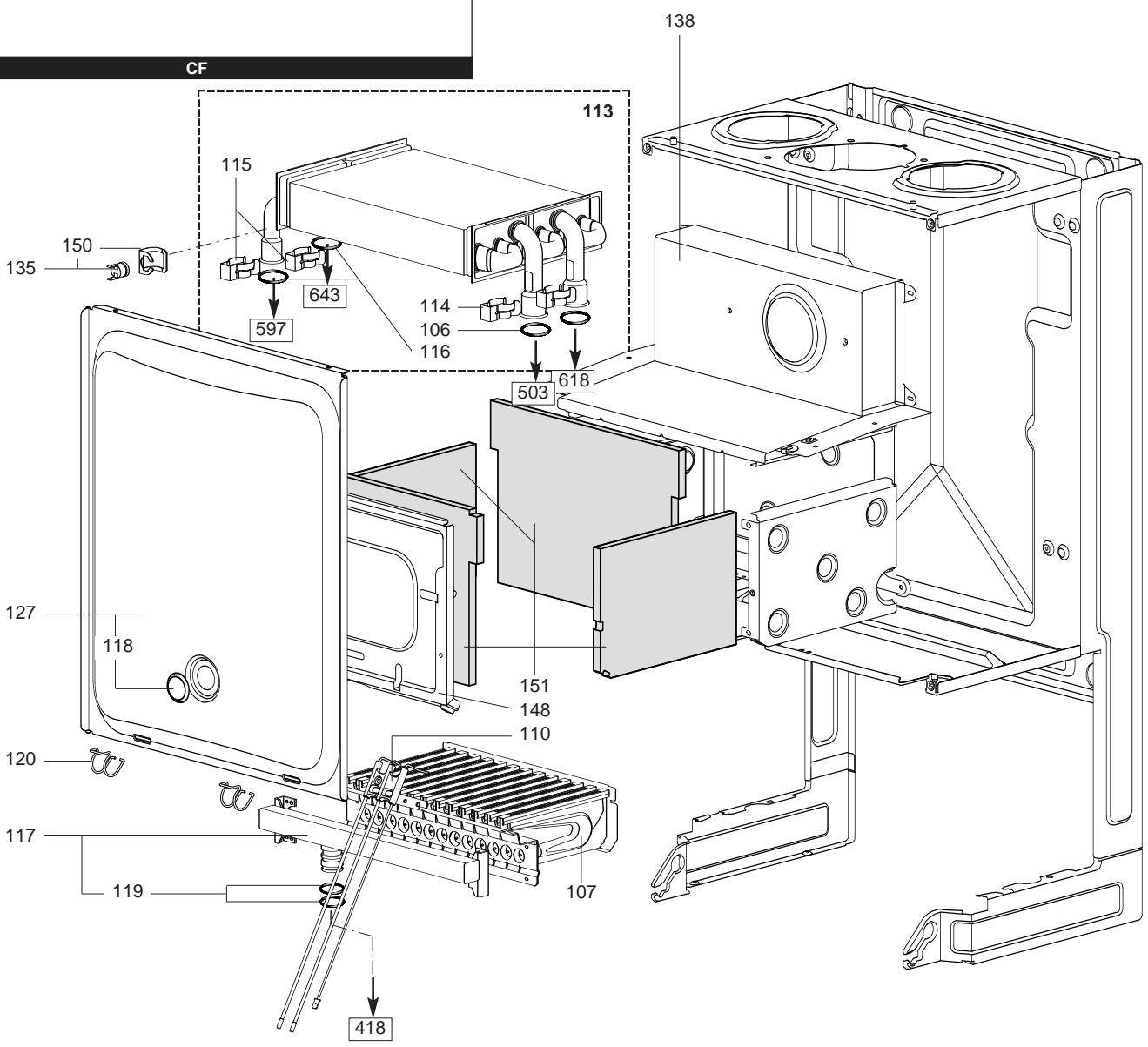
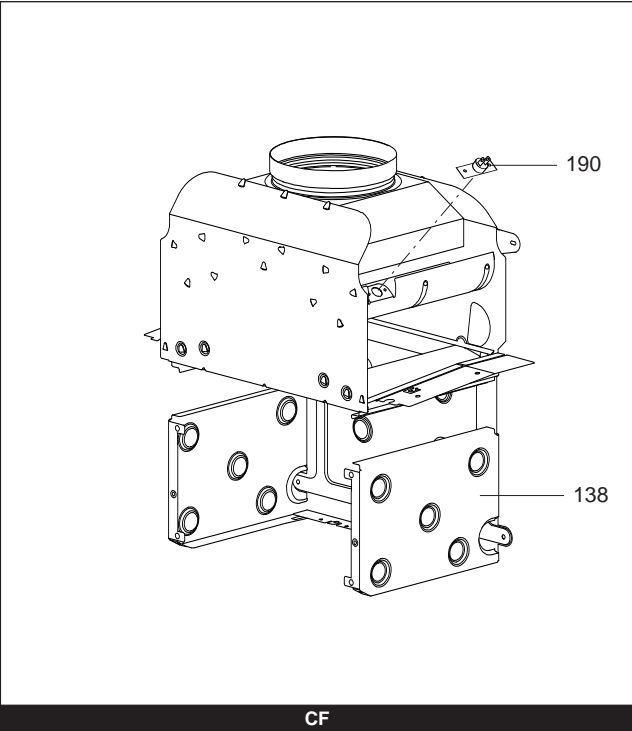
R8215807-06EN - Edition 06 - 18/05/2011

EGIS - AS

Caldaie Domestiche

3300179	EGIS 24 FF NG (PI)
3300193	EGIS 24 FF NG (EAA1)
3300195	EGIS 24 FF NG (EAA2)
3300252	EGIS 24 FF NG (IT)
3300320	EGIS 24 FF NG
3300253	EGIS 24 FF LPG (IT)
3300180	EGIS 24 FF LPG (PI)
3300321	EGIS 24 FF LPG
3300181	EGIS 24 CF NG (PI)
3300194	EGIS 24 CF NG (EAA1)
3300196	EGIS 24 CF NG (EAA2)
3300254	EGIS 24 CF NG (IT)
3300322	EGIS 24 CF NG
3300182	EGIS 24 CF LPG (PI)
3300255	EGIS 24 CF LPG (IT)
3300323	EGIS 24 CF LPG
3300183	AS 24 FF NG (IT, RO, PI)
3300335	AS 24 FF NG
3300348	AS-BIK 24 FF NG
3300184	AS 24 FF LPG (IT, RO, PI)
3300336	AS 24 FF LPG
3300185	AS 24 CF NG (IT, RO, PI)
3300337	AS 24 CF NG
3300186	AS 24 CF LPG (IT, RO, PI)
3300338	AS 24 CF LPG

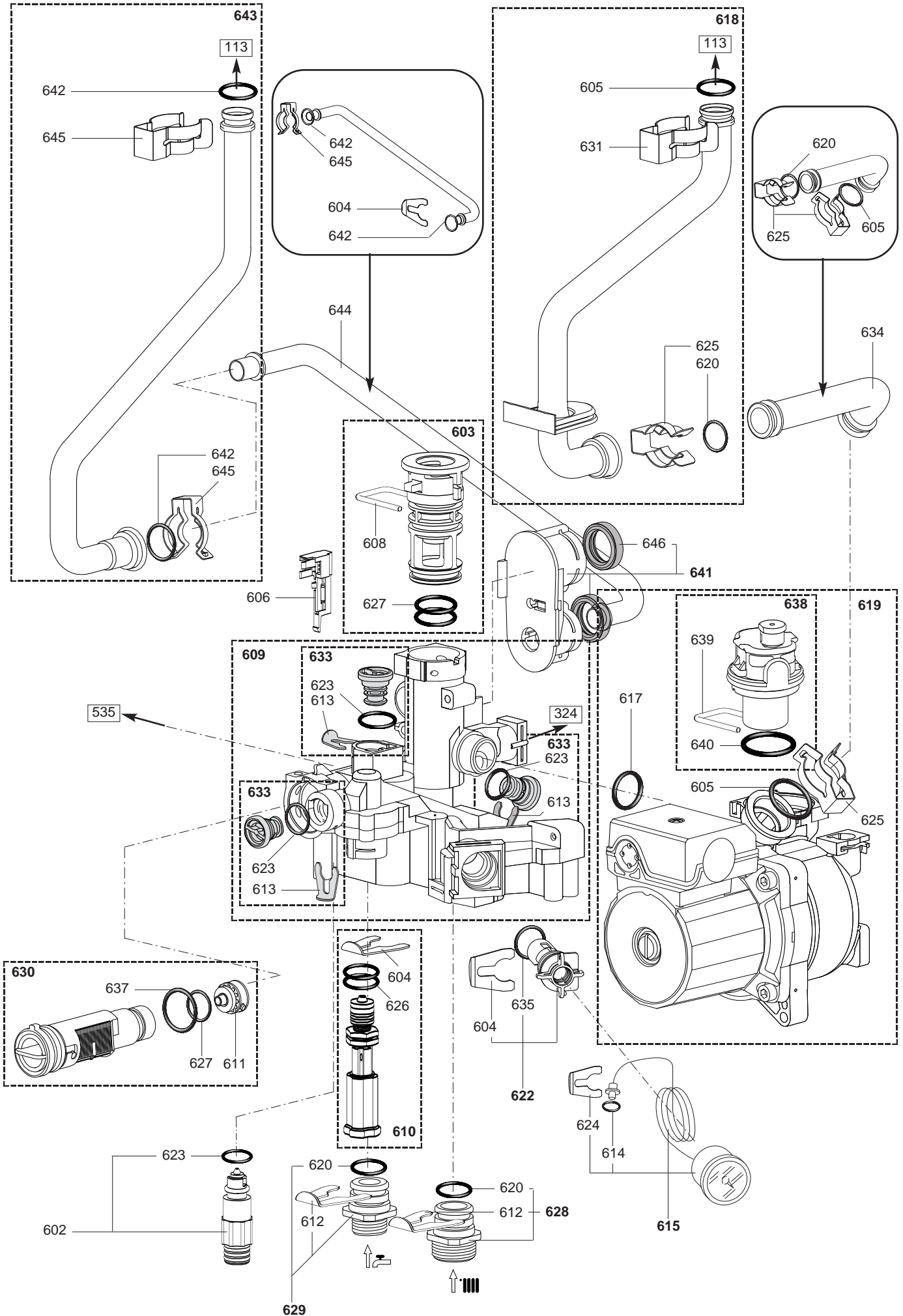
Reference	Ind.	Model type	Begin	End
-----------	------	------------	-------	-----



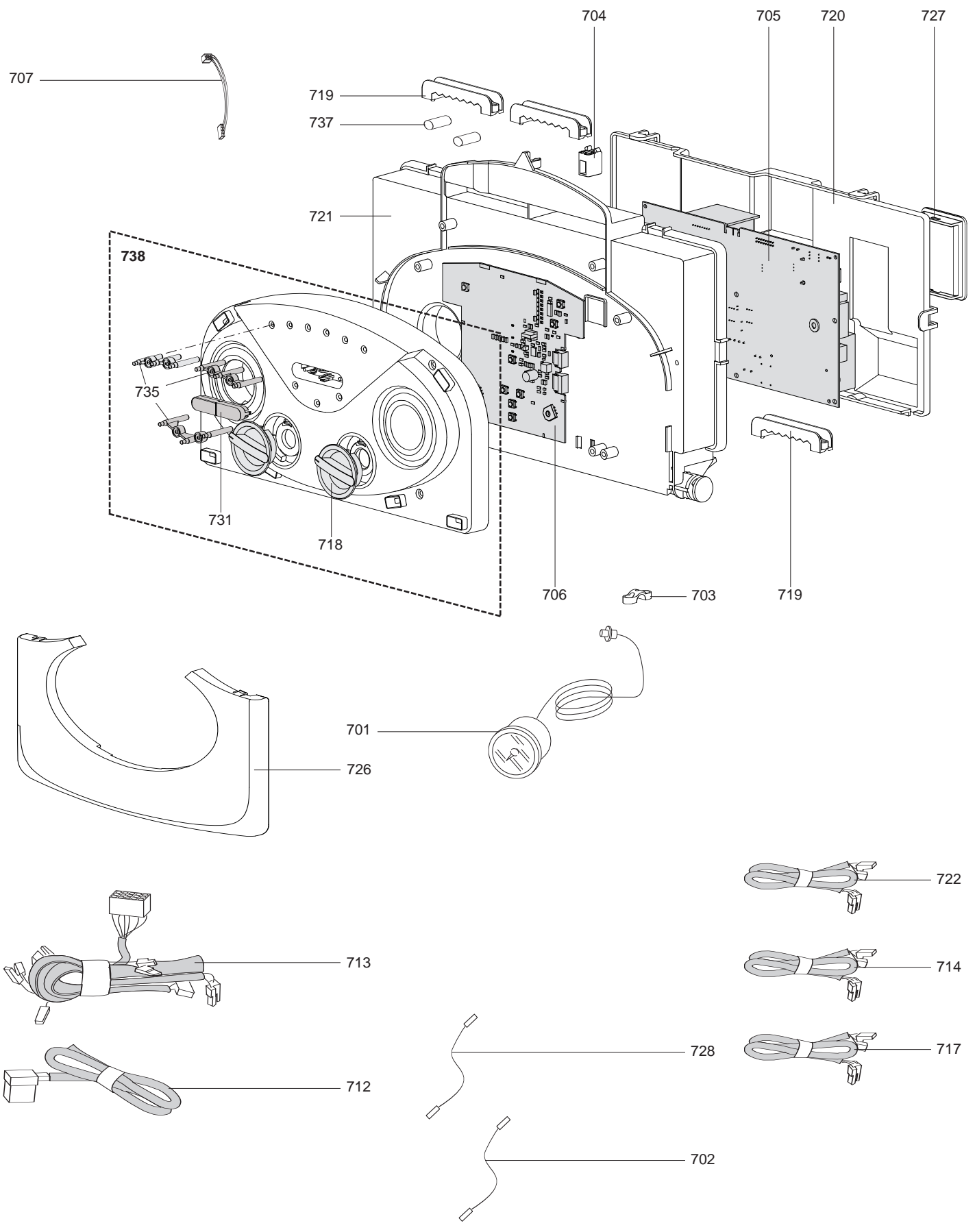
Key N	Description	Manf. Pt. N	Type	EGIS				Manf. date	
				EGIS		AS		from	to
				FF	CF	FF	CF		
0100	SEALED CASE								
0106	O-RING 3,53X17,04	65104262		•	•	•	•		
0107	BURNER 13NP	65104220		•		•			02/08
	BURNER 13NP	65104220			•		•		
	BURNER 11NP	65106294		•		•			03/08
0110	ELECTRODE (IGNITION/DETECTION)	65104549		•	•	•	•		
0113	MAIN EXCHANGER	65105094		•		•			02/08
	MAIN EXCHANGER	65105094			•		•		
	MAIN EXCHANGER	65106300		•		•			03/08
0114	CLIP	61307589		•	•	•	•		
0115	CLIP	65105109		•	•	•	•		
0116	O - RING (13X2)	65105108		•	•	•	•		
0117	GAS MANIFOLD 13 INJ. D:0.75	65105118	LG	•		•			02/08
	GAS MANIFOLD 13 INJ. D:0.75	65105118	LG		•		•		
	GAS MANIFOLD 11 INJ. D:0.77	65106606	LG	•		•			03/08
	GAS MANIFOLD 13 INJ. D:1.25	65104302	NG	•		•			02/08
	GAS MANIFOLD 13 INJ. D:1.25	65104302	NG		•		•		
	GAS MANIFOLD 11 INJ. D:1.32	65106302	NG	•		•			03/08
0118	SIGHT GLASS	65104232		•		•			
0119	O-RING 17,17X1,78	65104303		•	•	•	•		
0120	SPRING FRONT PANEL (KIT)	65104298		•		•			
0127	PANEL (FRONT - SEALED CHAMBER)	65105678		•		•			
0135	THERMOSTAT 102Å°	65104500		•	•	•	•		
0138	COMBUSTION CHAMBER 24CF	65104218			•		•		
	COMBUSTION CHAMBER 24/28 FF	65104219		•		•			02/08
	COMBUSTION CHAMBER 24/28 FF	65106301		•		•			03/08
0148	PANEL (COMBUSTION CHAMBER)	65104240		•		•			02/08
	PANEL (COMBUSTION CHAMBER)	65104240			•		•		
	PANEL (COMBUSTION CHAMBER)	65106296		•		•			03/08
0150	CLIP	61010050		•	•	•	•		
0151	PANELS (KIT)	65104695		•		•			02/08
	PANELS (KIT)	65104695			•		•		
	PANELS (KIT)	65106298		•		•			03/08
0190	THERMOSTAT 75-65Å°C	999539			•		•		

Key N	Description	Manf. Pt. N	Type	EGIS				Manf. date	
				24		AS		from	to
				FF	CF	FF	CF		
0200	FAN ASSEMBLY								
0201	SUPPORT (AIR PRESSURE SWITCH)	65104378		•	•				
0205	COLLAR GASKET	65104258		•					
0206	FAN	65104357		•	•				
0208	FAN GASKET	65104257		•	•				
0209	VENTURI 15/24FF	65106516		•	•				
0210	AIR INTAKE COVER	573329		•	•				
0212	PANEL (INSULATION - FAN)	65104305		•	•				
0216	AIR PRESSURE SWITCH 50 PA	65104671		•	•				
0220	CONDENSATE TRAP	65104623		•	•				
0300	CHASSIS-FRONT CASE								
0303	RESTRICTOR (D=44)	65105078		•					
0304	FLUE (EXHAUST MANIFOLD / HEADER)	65105393		•	•				
0305	AIR RETURN MANIFOLD	65104710		•	•				
0306	AIR RETURN COVER	65104249		•	•				
0320	GASKET	60000317		•	•				
0321	GASKET 3/8	573521		•	•	•	•		
0322	FLUE INTAKE PLUG	65104295		•	•				
0324	PIPE (EXPANSION VESSEL)	65104253		•	•	•	•		
0325	O-RING D: 8.9-2.7	61009834-14		•	•	•	•		
0327	EXPANSION VESSEL	65104261		•	•	•	•		
0337	HYDRAULIC GROUP SUPPORT	65104311		•	•	•	•		
0342	CASE PANEL (L.H. SIDE)	65104242		•	•	•	•		05/07
	CASE PANEL (L.H. SIDE)	65105676		•	•	•	•	06/07	
0344	CASE PANEL (FRONT)	65104299		•	•	•	•		
0345	CASE PANEL (R.H. SIDE)	65104241		•	•	•	•		05/07
	CASE PANEL (R.H. SIDE)	65105677		•	•	•	•	06/07	
0363	EXPANSION VESSEL SUPPORT	65104696		•	•	•	•		
0400	GAS SECTION								
0401	GAS VALVE	65104254		•	•	•	•		
0405	GASKET (SPARK GENERATOR)	574279		•	•	•	•		
0406	O-RING 22,22X2,62	65104304		•	•	•	•		
0407	SILICONE PIPE	65104296		•	•	•	•		
0418	PIPE (GAS VALVE/BURNER)	65104230		•	•	•	•		
0419	GAS PIPE	65104251		•	•	•	•		
0436	O-RING 17,17X1,78	65104303		•	•	•	•		
0444	SPARK GENERATOR	65104653		•	•	•	•		

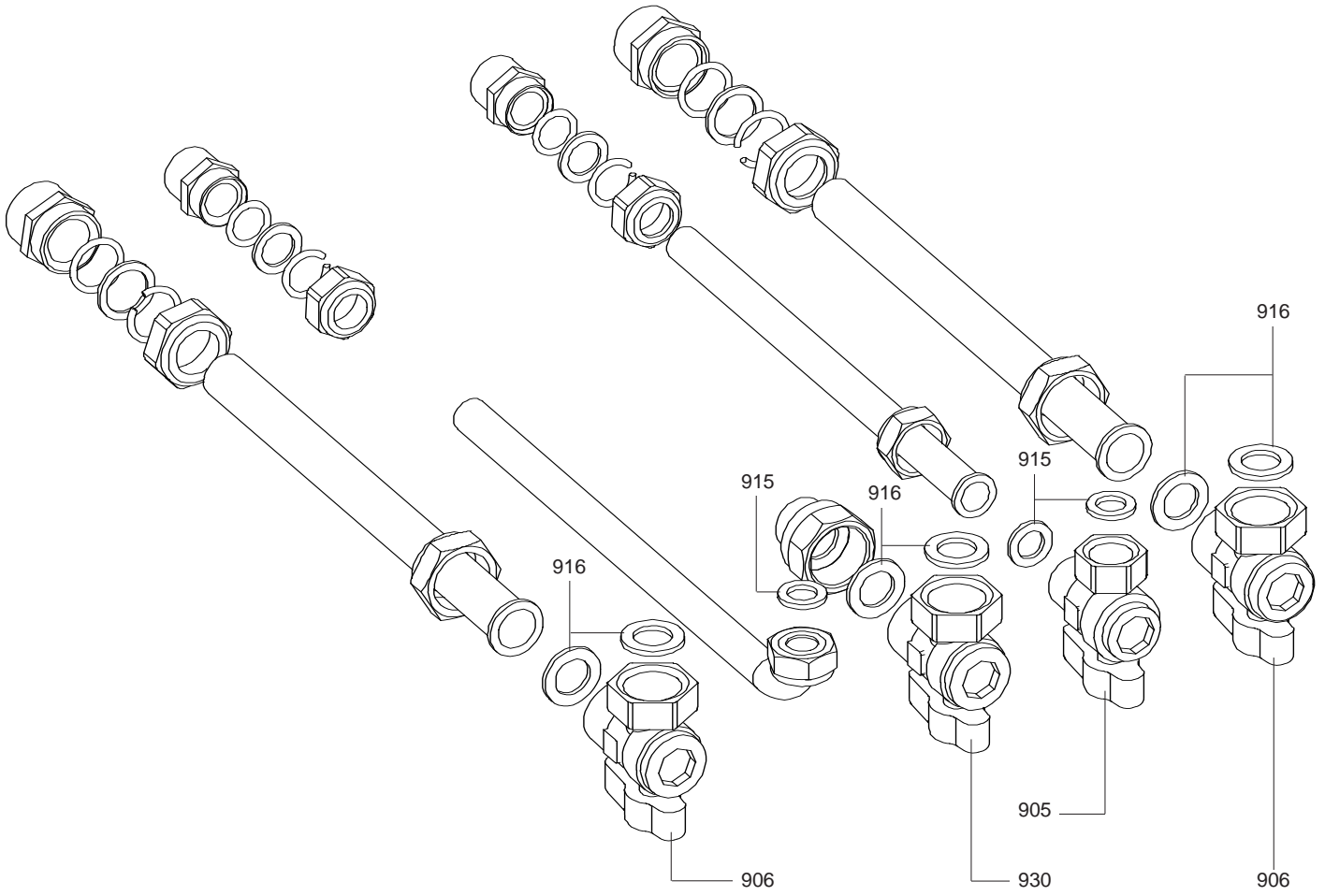
Key N	Description	Manf. Pt. N	Type	EGIS				Manf. date	
				EGIS		AS		from	to
				FF	CF	FF	CF		
0500	FLOW GROUP								
0501	FLOW GROUP	65105091		•	•	•	•		
0502	CLIP	65104332		•	•	•	•		
0503	PIPE (C.H. FLOW)	65105106		•		•			02/08
	PIPE (C.H. FLOW)	65105106			•	•			
	PIPE (C.H. FLOW)	65106307		•		•		03/08	
0504	TEMPERATURE PROBE + CLIP	65105079		•	•	•	•		
0505	CLIP	65104322		•	•	•	•		
0506	O - RING (13X2)	65105108		•	•	•	•		
0508	O-RING 3,53X17,04	65104262		•	•	•	•		
0512	PLUG	65104445		•	•	•	•		
0515	BY-PASS	65104336		•	•	•	•		
0516	CLIP	65105109		•	•	•	•		
0525	CLIP D=18	65104259		•	•	•	•		
0526	CLIP D:10	65104260		•	•	•	•		
0534	O - RING (15.88X2.62)	65104337		•	•	•	•		
0535	BY-PASS PIPE	65104340		•	•	•	•		
0537	PRESSURE RELIEF VALVE 3 BAR	61312668		•	•	•	•		
0540	O-RING D: 17.86-2.62	61308091		•	•	•	•		
0561	PIPE (SAFETY VALVE)	65104447		•	•	•	•		
0566	UNION (3/4)	65104326		•	•	•	•		
0567	UNION (1/2)	65105121		•	•	•	•		
0571	LOW PRESSURE SWITCH	65105090		•	•	•	•		
0575	CLIP	61307589		•	•	•	•		
0576	TEMPERATURE PROBE + CLIP	990686		•	•	•	•		
0594	O - RING (15.54X2.62)	65104325		•	•	•	•		
0595	SHEET GASKET D: 13.9-10.4-1.5	60061853-02		•	•	•	•		
0596	CLIP (BY-PASS PIPE)	65104700		•	•	•	•		
0597	DOMESTIC HOT WATER DELIVERY PIPE	65105107		•		•			02/08
	DOMESTIC HOT WATER DELIVERY PIPE	65105107			•	•			
	DOMESTIC HOT WATER DELIVERY PIPE	65106304		•		•		03/08	



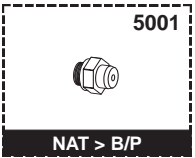
Key N	Description	Manf. Pt. N	Type	EGIS				Manf. date	
				EGIS		AS		from	to
				FF	CF	FF	CF		
0600	RETURN GROUP								
0602	KIT DRAIN SCREW	60001385		•	•	•	•		
0603	PLUG	65105093		•	•	•	•		
0604	CLIP	65104331		•	•	•	•		
0605	O-RING 3,53X17,04	65104262		•	•	•	•		
0606	SENSOR (REED)	65104323		•	•	•	•		
0608	CLIP	65104316		•	•	•	•		
0609	RETURN GROUP	65104335		•	•	•	•		
0610	FILLING TAP KIT	65104324		•	•	•	•		
0611	RIDUCTORS (KIT)	65104318		•	•	•	•		
0612	CLIP D=18	65104259		•	•	•	•		
0613	CLIP D:10	65104260		•	•	•	•		
0614	O RING D: 5.7-1.9	61009834-10		•	•	•	•		
0615	PRESSURE GAUGE	65104234		•	•	•	•		
0617	O - RING (21.89X2.62)	65104320		•	•	•	•		
0618	PIPE (C.H. RETURN)	65105102		•		•			02/08
	PIPE (C.H. RETURN)	65105102			•	•			
	PIPE (C.H. RETURN)	65106306		•		•		03/08	
0619	PUMP 4M 1V	60001584		•	•	•	•		
0620	O-RING D: 17.86-2.62	61308091		•	•	•	•		
0622	WATER FILTER	60001372		•	•	•	•		
0623	O - RING (9.19X2.62)	65104313		•	•	•	•		
0624	CLIP	65100680		•	•	•	•		
0625	CLIP	60000309		•	•	•	•		
0626	O - RING (1.78X8.74)	65104329		•	•	•	•		
0627	O - RING (23.47X2.62)	65104315		•	•	•	•		
0628	UNION (3/4)	65104326		•	•	•	•		
0629	UNION (1/2)	65104327		•	•	•	•		
0630	FLOW METER	65104317		•	•	•	•		
0631	CLIP	61307589		•	•	•	•		
0633	PLUG	65104377		•	•	•	•		
0634	UNION (PUMP - PIPE)	65105103		•	•	•	•		
0635	O - RING (15.54X2.62)	65104325		•	•	•	•		
0636	CHECK VALVE CARTRIDGE	65105323		•	•	•	•		
0637	O-RING 17,17X1,78	65104303		•	•	•	•		
0638	AUTO AIR VENT WITH O-RING	65104703		•	•	•	•		
0639	U-CLIP	65104704		•	•	•	•		
0640	O-RING	65104705		•	•	•	•		
0641	INTERFACE	65105092		•	•	•	•		
0642	O - RING (13X2)	65105108		•	•	•	•		
0643	DOMESTIC HOT WATER DELIVERY PIPE	65105104		•		•			02/08
	DOMESTIC HOT WATER DELIVERY PIPE	65105104			•	•			
	DOMESTIC HOT WATER DELIVERY PIPE	65106305		•		•		03/08	
0644	UNION (PIPE - DELIVERY GROUP)	65106290		•	•	•	•		
0645	CLIP	65105109		•	•	•	•		
0646	EXCHANGER GASKET	65104334		•	•	•	•		



Key N	Description	Manf. Pt. N	Type	EGIS				Manf. date	
				EGIS		AS		from	to
				FF	CF	FF	CF		
0700	ELECTRICAL BOX								
0701	PRESSURE GAUGE	65104234		•	•	•	•		
0702	EARTH WIRE	65104286		•	•	•	•		
0703	CABLE CLAMP	571562		•	•	•	•		
0704	PUSH	65104228		•	•	•	•		
0705	SCHEDA PRINCIPALE	65105818-01		•	•	•	•		
0706	PRINTED CIRCUIT BOARD (DISPLAY)	65105084		•	•	•	•		
0707	DISPLAY WIRING	60000746	/ CN02	•	•	•	•		
0712	PUMP 1V CABLE	65105081	/ CN10	•	•	•	•		
0713	NTC - PRES. SENSOR - GAS VALVE CABLE	60001379	/ CN04	•	•	•	•		
0714	FEEDER 240V	60000993		•	•	•	•		
0717	NTC - OVERHEAT THER. - PRES SWITCH CABLE	65105082	/ CN22	•		•			
	NTC PROBE - OVERHEAT THERMOSTAT CABLE	65105119	/ CN22		•		•		
0718	KNOB	65105086		•	•	•	•		
0719	CABLE CLAMP	65103377		•	•	•	•		
0720	CONTROL PANEL COVER (REAR)	65104293		•	•	•	•		
0721	CONTROL PANEL	65104300		•	•	•	•		
0722	FAN CABLE	65107270	/ CN10	•		•			
	FLOW METER CABLE	60000813	/ CN14	•	•	•	•		
0726	LOWER COVER	65104379		•	•				
	LOWER COVER	65105281				•	•		
0727	INSPECTION COVER	65104294		•	•	•	•		
0728	IONIZATION ELECTRODE CABLE	65104518	/ CN05	•	•	•	•		
0731	PUSH BUTTON ON/OFF	65105087		•	•	•	•		
0735	PILOT LIGHT	65105088		•	•	•	•		
0737	GASKET D:7	65105089		•	•	•	•		
0738	CONTROL PANEL	65105085		•	•				
	CONTROL PANEL	65105280				•	•		



5000



LIST OF THE ABBREVIATIONS

HW	: Hot water.
CW	: Cold water.
C	: Ceramic resistance (normal heating).
Ca	: Ceramic resistance (accelerated heating)
TP	: Immersion heater.
1F	: With fittings.
2F	: Without fittings.
3F	: With fittings and another outlet connection.
AMI	: With mixing valve.
SMI	: Without mixing valve.
PUISS	: Power of th appliance.
PN	: Appliance with normal pression.
LP	: Appliance with low pression.
PV	: Appliance with variable power.
PF	: Appliance with fixed power..

IDENTIFICATION PLATE

SERIAL NUMBER

11 Characters :	1 95 065004 - 31		
Month of manufacture :			Technical number of the appliance
from 1 to 9 → Jan. to Sep.,			Sequential number
O → Oct., N → Nov.,			Year of manufacture
D → Dec.			
19 Characters :	08 05 0013199 900640031		
Year of manufacture			Product reference
Month of manufacture			Sequential number
20 Characters :	3675007 XX 2 07 070 00315		
Product reference			Sequential number
Millenium of manufacture			Manufacturing day
			Year of manufacture
21 Characters :	3675007 XX 07 070 0000315		
Product reference			Sequential number
Year of manufacture			Manufacturing day

The indications mentionned on the prices, commercial or technical literature and the scheme are written for your guidance and are available at a given time. The CONSTRUCTOR retains the power to modify the presentation, the form, the size, the conception or the material of the products.

